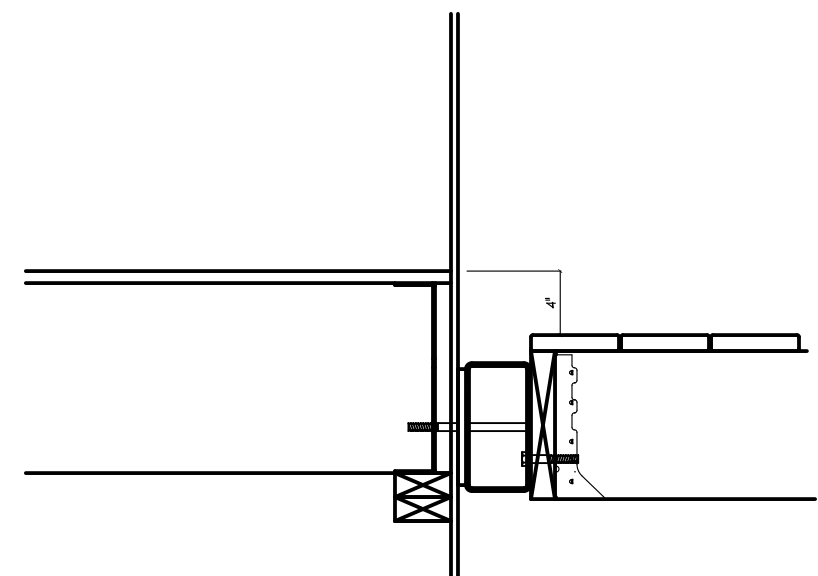
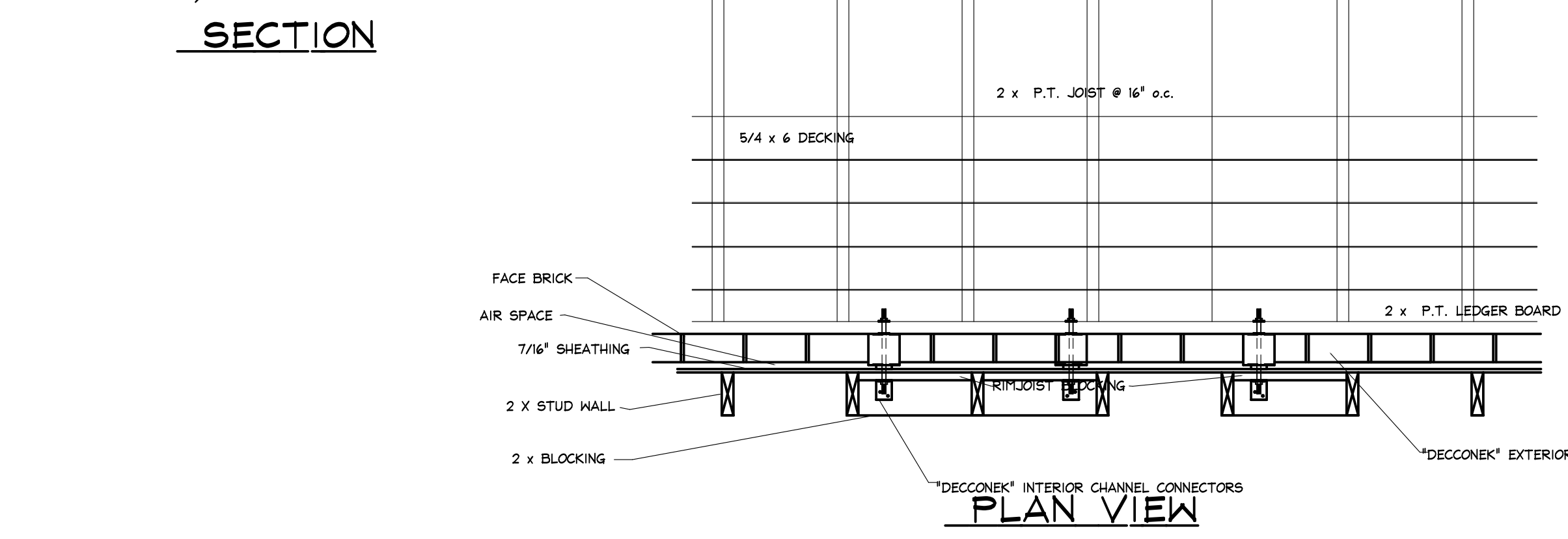
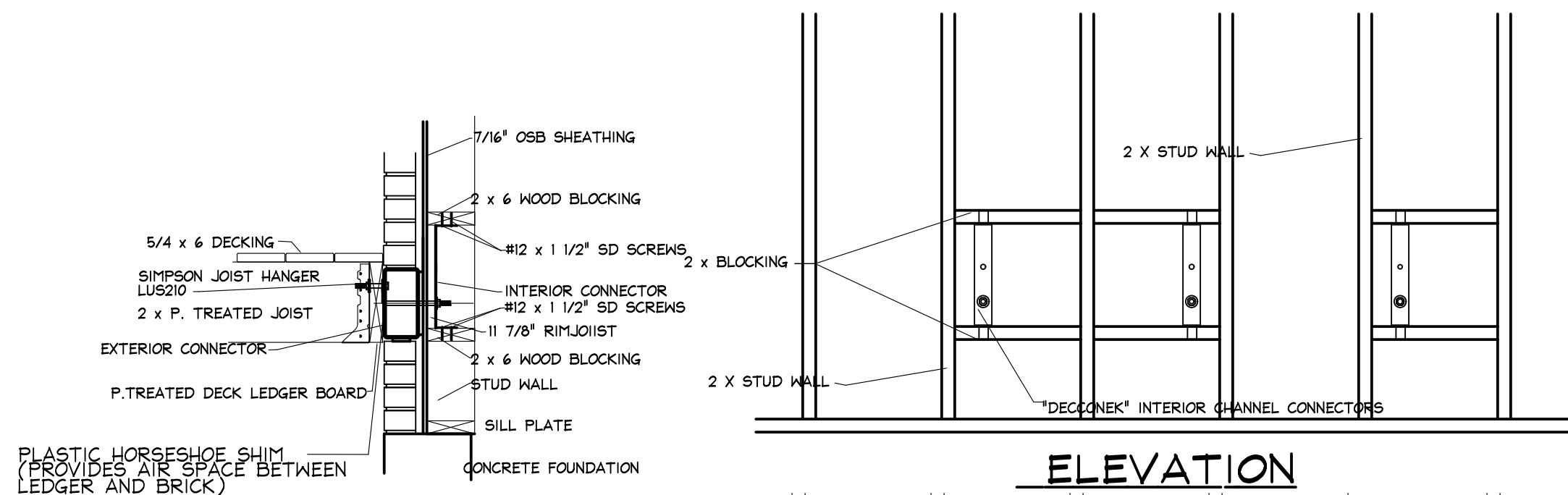
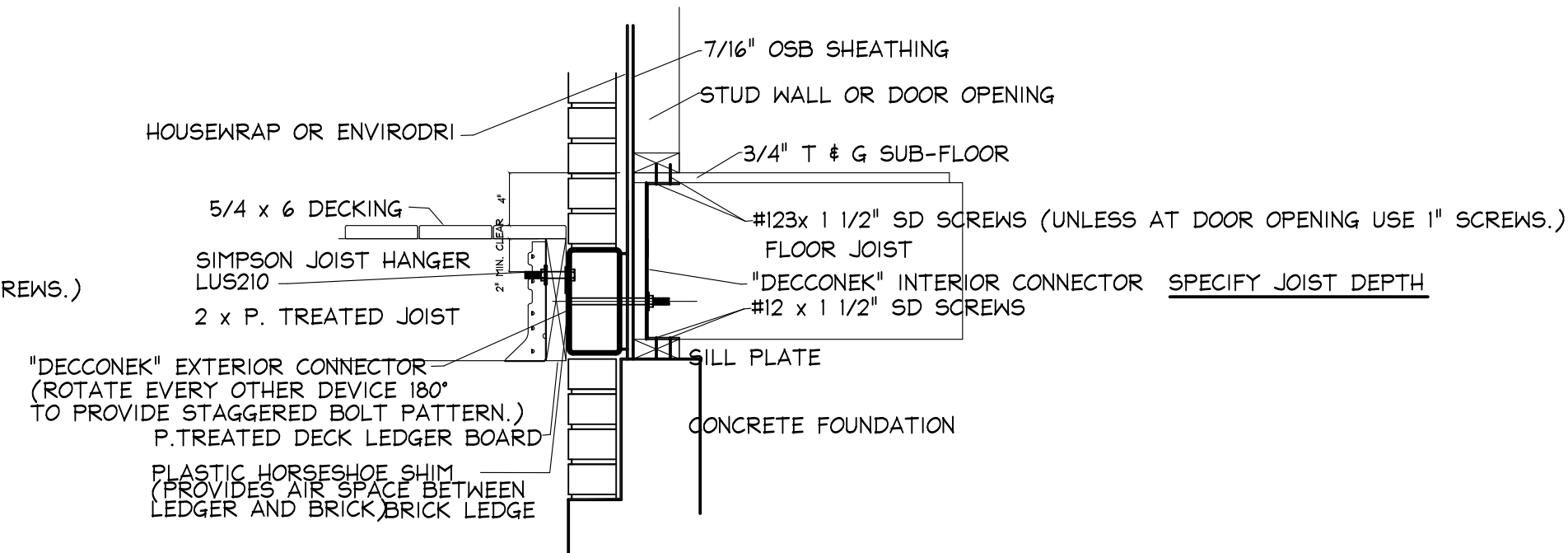
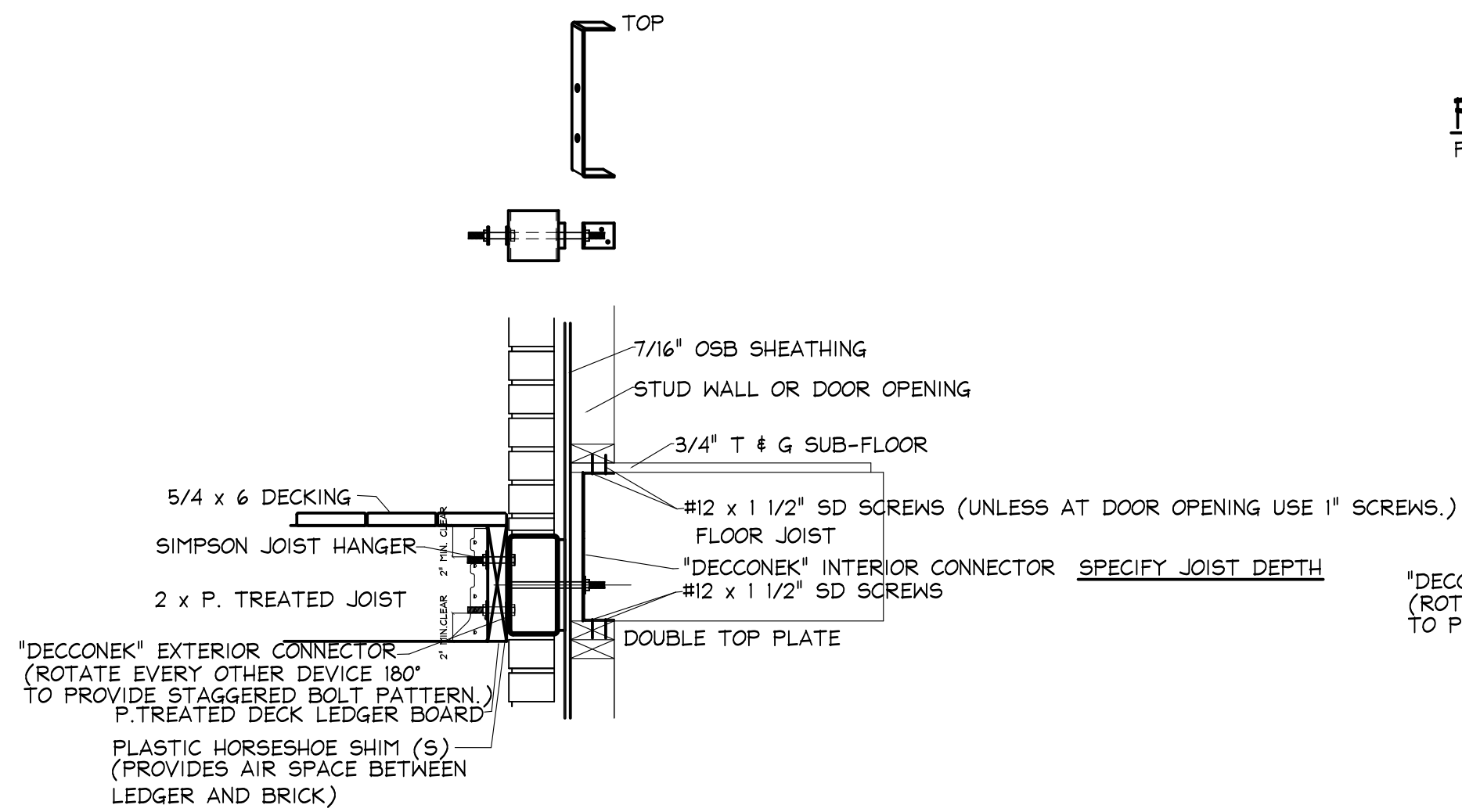
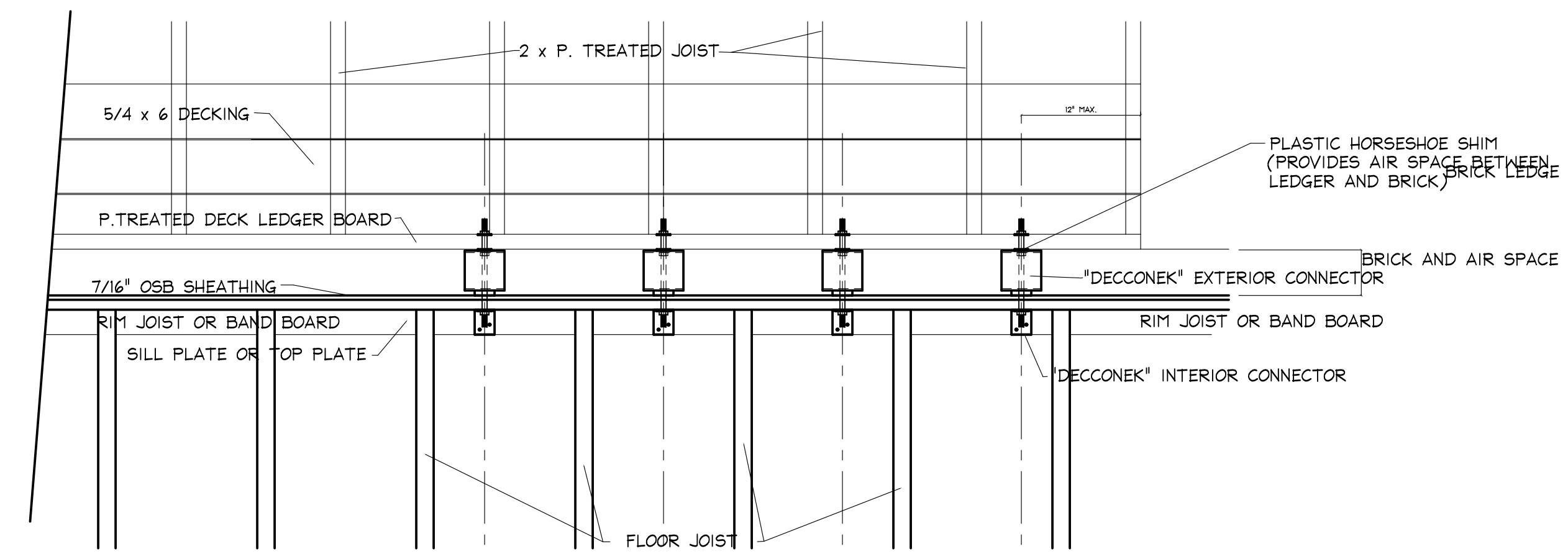
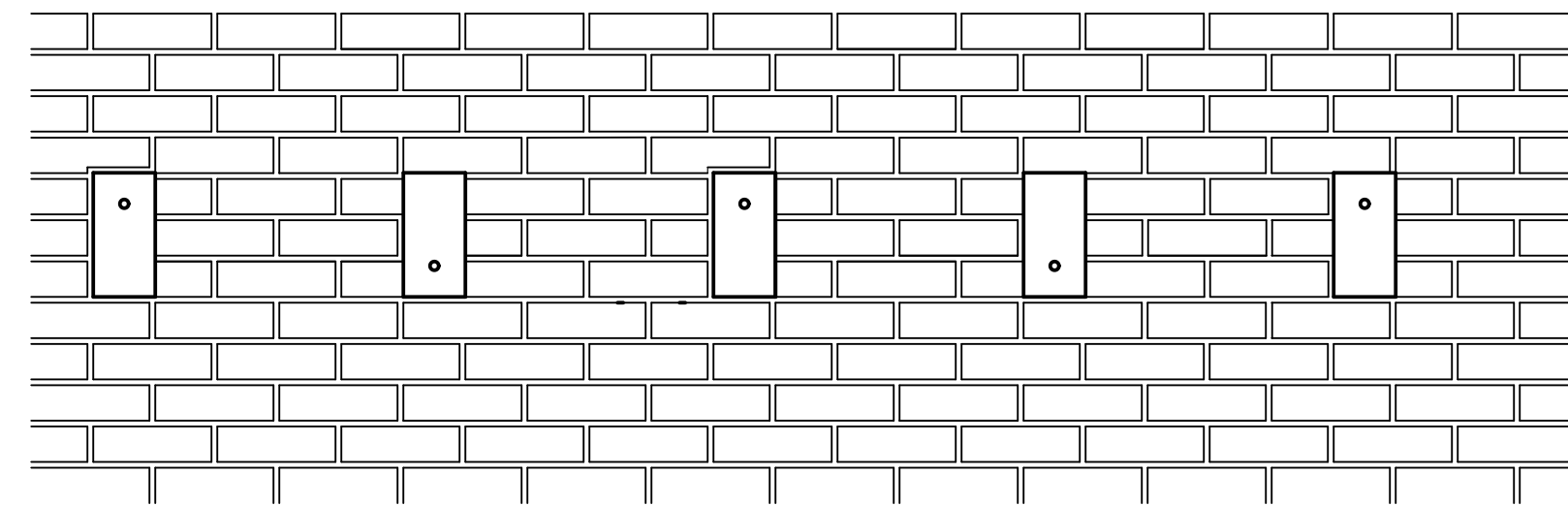
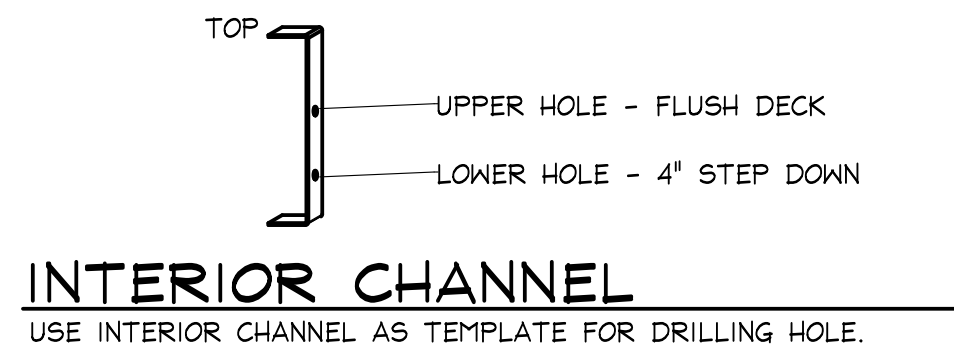


11 7/8" JOIST  
(FLUSH) TOP HOLE



11 7/8" JOIST  
(4" STEP DOWN) BOTTOM HOLE



STUD WALL INSTALLATION

CROSS-SECTION WALKOUT BASEMENT

INSTALLATION PROCEDURE:  
DECCONEK IS TO BE INSTALLED AFTER THE HOUSEWRAP (TYVEK, ENVIRODRI, ETC.), AND MASONRY SILL WATER-RESISTANT BARRIER IS INSTALLED.

INSTALLATION INSTRUCTIONS

- LAYOUT SPACING OF DECCONEK DEVICES BETWEEN JOIST
- INSTALL INTERIOR CHANNEL PER SPACING REQUIREMENTS, SECURE IN PLACE WITH 2-1 1/2" #12 TEK SCREWS TO SILL PLATE AND THROUGH SUB-FLOOR INTO SOLE PLATE, (USE 2-1" #12 TEK AT DOOR OPENINGS)
- DRILL 9/16" Ø HOLE THROUGH RIMJOIST & SHEATHING (USE INTERIOR CHANNEL AS TEMPLATE)
- INSTALL DECCONEK DEVICE THROUGH THE DRILLED HOLE, KEEP DEVICE PERPENDICULAR TO SILL PLATE, ROTATE EVERY OTHER DEVICE 180° FOR STAGGERED BOLT PATTERN SECURE IN PLACE WITH WASHER AND NUT

Benefits:  
No Post and Beam System  
No footings or piers to extend to undisturbed soil.  
Labor Efficient  
Cost Effective  
Visibly Aesthetic (covered by ledger board)  
Galvanized

106.5.1 Design criteria. An alternative engineered design shall conform to the intent of the provisions of this code and shall provide an equivalent level of quality, strength, effectiveness, fire resistance, durability and safety. Materials, equipment or components shall be designed and installed in accordance with the manufacturer's installation instructions.

106.5.2 Submittal. The registered design professional shall indicate on the application that the system is an alternative engineered design. The approval and permanent approval records shall indicate that an alternative engineered design was part of the approved installation.

CROSS-SECTION ON FOUNDATION

INSTALLATION PROCEDURE:  
DECCONEK IS TO BE INSTALLED AFTER THE HOUSEWRAP (TYVEK, ENVIRODRI, ETC.), AND MASONRY SILL WATER-RESISTANT BARRIER IS INSTALLED.

CONNECTOR DESIGN LOADS

LOADINGS: DECCONEK IS DESIGNED TO SUPPORT A VERTICAL LOAD OF: 1025 lbs. AND A LATERAL LOAD OF: 1500 lbs. PER DEVICE. (BASED ON A 2 x 10 JOIST, MAX. SPAN OF 16'-0" WITH A 40 PSF LIVE LOAD AND 10 PSF DEAD LOAD, DECCONEK SPACED AT 24" o.c.)

DECCONEK SPACING

| JOIST SPAN | ON-CENTER SPACING OF DECCONEK |              |               |                |                |                |                |     |
|------------|-------------------------------|--------------|---------------|----------------|----------------|----------------|----------------|-----|
|            | 6' and LESS                   | 6' -1" to 8' | 8' -1" to 10' | 10' -1" to 12' | 12' -1" to 14' | 14' -1" to 16' | 16' -1" to 18' | 18' |
|            | 36"                           | 36"          | 32"           | 28"            | 24"            | 20"            | 18"            |     |

WARNING: Always read and follow the operating and safety instructions in the power tool owner's manual and the instructions for use of the accessory. Always wear safety goggles to protect your eyes, gloves to protect your hands, and wear other appropriate safety items for protection. Do not drill near live electrical circuits. Do not use a side-to-side movement when drilling, make sure the backside of the material being drilled is clear of wires, cables, pipes, and other objects that might cause hazards.

DATE: 09.15.16  
REVISIONS:  
JOB No. DECCONEK

INSTALLATION DRAWINGS FOR:  
**DECCONEK**  
FOR CONNECTING DECK LEDGER BOARDS TO A BRICK VENEERED RESIDENCE

SHEET No.

